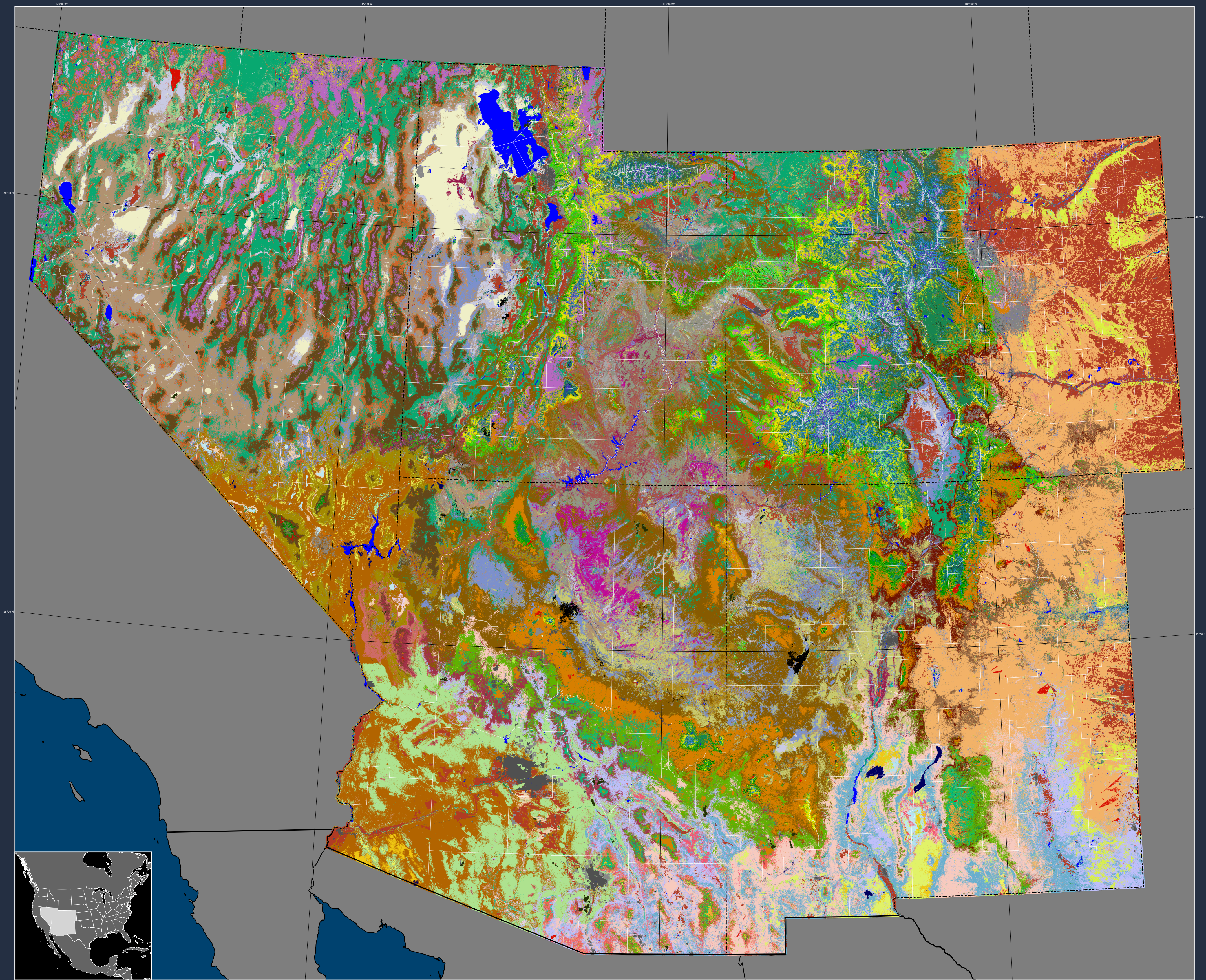


# Southwest Regional GAP Landcover



Scale 1:2800000  
0 50000 100000 150000 200000 250000  
1 inch = 72942 meters



Albers Equal Area Projection  
Central Meridian 109° 02' 35" West Longitude  
Standard Parallels 29° 30' and 45° 30' North Latitude  
North American Datum of 1983  
Map created July 2005 by Kent Braddy  
Remote Sensing / GIS Laboratory



This map was generated using data from the landcover mapping portion of the Southwest Regional Gap Analysis Project (SWReGAP). SWReGAP was initiated in 1999 as a multi-institutional cooperative effort to map and assess biodiversity for a five-state region (Arizona, Colorado, Nevada, New Mexico, Utah) comprising approximately 560,000 square miles in the southwestern United States. A key task was the development of a seamless landcover map for the region and the collection of other pertinent bio-physical spatial data. Through coordination from the U.S. Geological Survey's Gap Analysis Program (GAP) and the collaborative efforts of participating state institutions, a seamless landcover product was completed in September 2004. These data and related datasets are made available to the public with "provisional" status by the SWReGAP consortium of institutions responsible for their development, and can be obtained via download at <http://earth.gis.usu.edu/swgap>.

Multi-season satellite imagery (Landsat ETM+) from 1999 - 2001 were used in conjunction with digital elevation model (DEM) derived datasets (e.g. elevation, landform, aspect, etc.) to model natural and semi-natural vegetation. Landcover classes are drawn from NatureServe's Ecological System concept, with 109 of the 125 total classes mapped at the system level. For the majority of classes, a decision tree classifier was used to discriminate landcover types, while a minority of classes (e.g. urban classes, sand dunes, burn scars, etc.) were mapped using other techniques. Twenty mapping areas, each characterized by similar ecological and spectral characteristics, were modeled independently of one another. These mapping areas, which included a 4 km overlap, were subsequently mosaicked to create the regional dataset. An internal validation for modeled classes was performed on a withheld 20% of the sample data. Results of the validation will be presented in the project final report.

## Legend

